

Designed and made in Denmark

SKAARHOJ



Inventing the future of media production control

SKAARHOJ booklet | 2nd edition | 2021



Hi Friends

We are passionate about giving you the best possible control experience for your live productions!

With our products you will feel the control at your fingertips. You can control multiple devices, even from different brands - all from the same surface.

You will have less wires and more control. And you will be able to reconfigure and expand your controller to work with your new camera, new switcher, and new router.

We honestly believe we make the best universal broadcast controllers on the planet and we would love to make your professional life easier with them.

Kasper Skårhøj

CEO, Founder and Chief Designer

What We Do	06
Our Software Platforms	09
Supported Hardware	10
Technology Signature	12
PTZ Control	16
Live Switching	28
Camera Shading	42
Routing and Utility	52
Broadcast Audio	60
Replay	62
Link IO	64
Modularity Reimagined	70
Mega Panel	72
Unisketch OS	76
Blue Pill Reactor	80

Camera Shading



PTZ Control



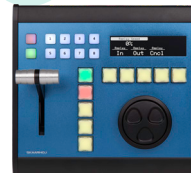
Live Switching



Broadcast Audio



Replay



Routing & Utility



Control Anything

Connect and get the tactile control at your fingertips

Our mission is to ease the control of technology for people in media production. We want to make it as easy as possible to control anything. Therefore we work on integration of a lot of different brands and products. Everything from switchers, routers and cameras to software suites and light bulbs!



...and Everything



...over IP! IP connectivity is the future. SKAARHOJ products are born like that. One cable carries power and network data. Devices without network connections are easily integrated with IP converters.



*) The displayed trademarks and logos are not owned by SKAARHOJ ApS and they are used for identification only. They do not imply endorsement of SKAARHOJ by the trademark owners. They are intended to convey SKAARHOJ's current or future integration with solutions from the displayed brands.

Modularity Reimagined

Blue Pill is the pain killer that makes the world of integration simple again. As a new platform in SKAARHOJ's ecosystem it will boost your SKAARHOJ controllers with unparalleled modularity and capacity for device control. Extension cables will untangle connections. Software applications will add new features down the road.

Blue Pill 599€ / 699\$



NEW
Shipping soon in Q4

Blue Pill also has device cores just like UniSketch OS does. But they are slightly differently designed and generally more powerful and entails more flexibility. The devices you can control with Blue Pill and UniSketch will have a large overlap, but as you plan your designs, we invite you to check it first at our website:

www.skaarhoj.com/device-cores

We offer two software platforms now!



UniSketch OS

This legendary platform is used by more than 10.000 controllers world-wide. Choose between more than 100 device cores for big brands like Sony, Panasonic, BirdDog, Blackmagic Design and many more. UniSketch gives you complete control over what the buttons do, so you can gain direct control of the exact features you need.



Blue Pill Reactor

Reactor is our new flagship configuration engine available on Blue Pill. In Reactor, your panels and your device cores are fused together with unseen simplicity and flexibility at the same time. A decade of experience with UniSketch and broadcast control has driven us to design this new system for the future. Best of all - it's based on known SKAARHOJ technologies like Raw Panel and therefore Reactor is essentially the booster technology that gives your new *and* existing UniSketch based controllers new capabilities!

Reactor takes modularity to a completely new level. Think about it like this: Two or more UniSketch controllers connected to Reactor will be seen as one single control interface and there is absolutely no limit to how you can distribute actions to your buttons, knobs, faders and joysticks across the controllers. Seamless. 100%.



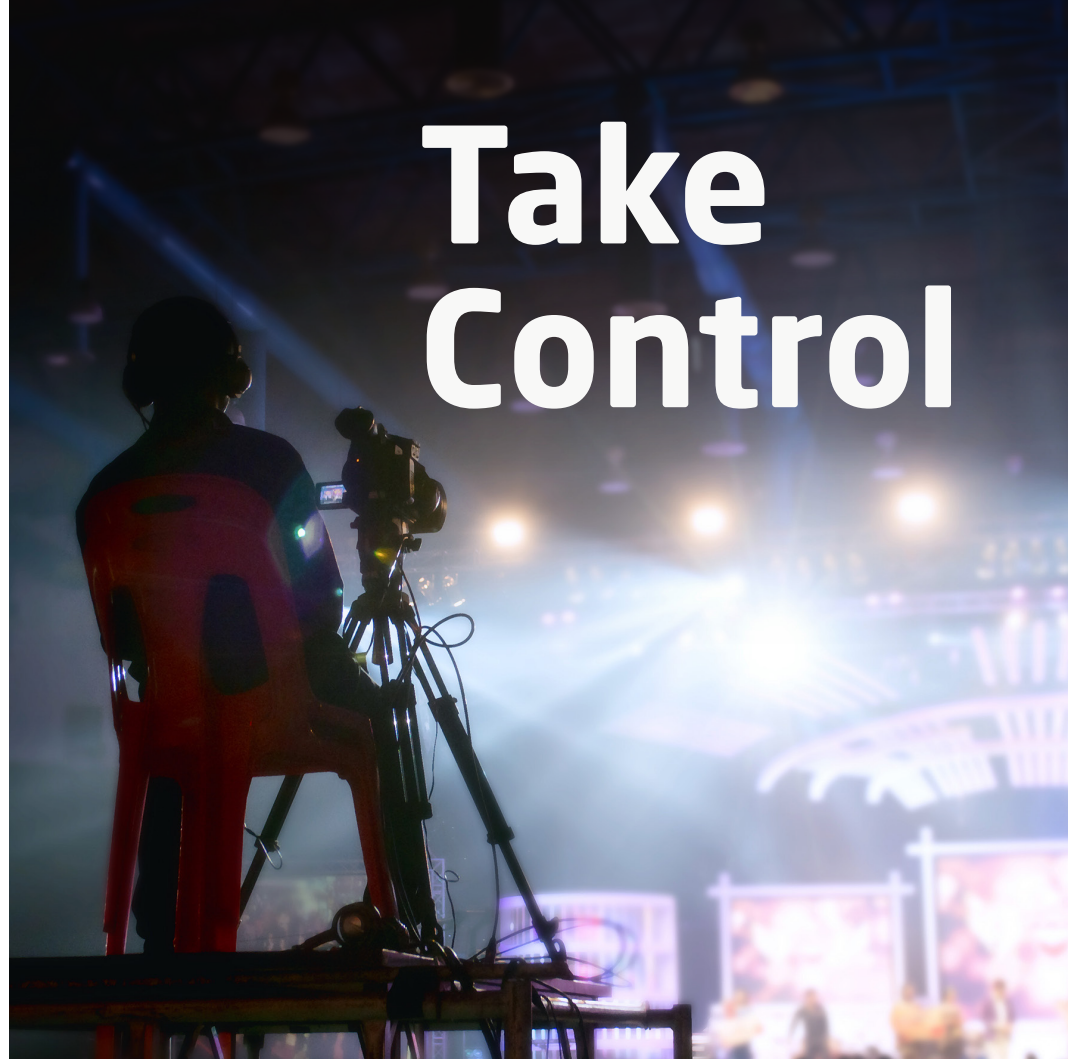
Supported hardware

We call them *device cores* and they are like “apps” you install on your controller. We write new device cores for UniSketch and Blue Pill Reactor all the time. So every day your controller becomes more and more valuable and flexible because new device cores are just a click away.



Here are some of the brands and products in the broadcast and AV industry that we support already or are in the process of supporting.

Take Control



Signature Technologies

Graphical OLED displays provide buttons, knobs and faders with dynamic labels. They combine large, bold labels with unprecedented levels of detail using titles, icons and scales to enrich the main content. They automatically draw information from the connected devices or you can type in your own labels or upload graphics. Found everywhere in many sizes and dimensions on SKAARHOJ controllers.

RGB backlight and LED bars are super practical to color code sections based on their assigned functionality. This provides the operator with instinctive clues which can be the critical difference between success and failure. Colors can be assigned manually and SKAARHOJ panels are dimmable. And they look really cool!

Four-way buttons - custom molded tactile elastomer buttons, that detect whether a button is pressed on the left, right, lower or upper edge. This allows the button to adjust values up and down like an encoder when pressing opposing edges. It could even work as a simple joystick. Or it can be just a button. Innovative, insanely flexible and perfect for a universal controller.

Renown Industrial Design

- for years we have diligently designed and fine-tuned our custom elastomers, aluminum extrusions and front panels to become unique, beautiful and strong components worthy of the superbly flexible and modular electronics and software that make up our wonderful broadcast and AV controllers.

100% IP & PoE: One cable carries power and the signals for as many devices as you control. Your switcher, video router, recording deck, your cameras even. The future is IP while legacy serial systems can typically be supported by end-point converters or Blue Pill Extension Cables which is often more convenient anyway. And active Power over Ethernet (IEEE802.3af) declutters your desk nicely.

Options

+ NKK
+600€

Add best-in-class NKK buttons with sculptured caps to the lower bus row and ME section for old-school luxury.

+ SDI
+250€

The SDI option adds a Blackmagic Arduino shield on the controller for reading and writing Camera Control data.

+ GPI
+250€

Add general purpose opto-isolated inputs and relay outputs, 2x8 In/Out.

+ JOY
+350€

Upgrade to an industrial precision Hall Effect joystick for increased ergonomic comfort and motion precision.



Easy Control



PTZ Control

// Awesome! I want it all...thanks!



Our PTZ controllers are made with the operator in mind! It's Danish design made from a deep understanding of the needs for the PTZ operator. We have created a series of premium surfaces that will follow you for years.

Operate robotic cameras from Panasonic, NewTek, Lumens, Canon, Avonic, Bolin, BirdDog, JVC, Marshall, Datavideo, PTZOptics, Minrray, OPTOver, Ross, Agile, AIDA and Sony.

PTZ Extreme

3399€ / 3999\$

Auxiliary keys for iris/focus options

Four-way buttons with legends for menu

Freely assignable encoders with OLED

3-axis Hall Effect Joystick



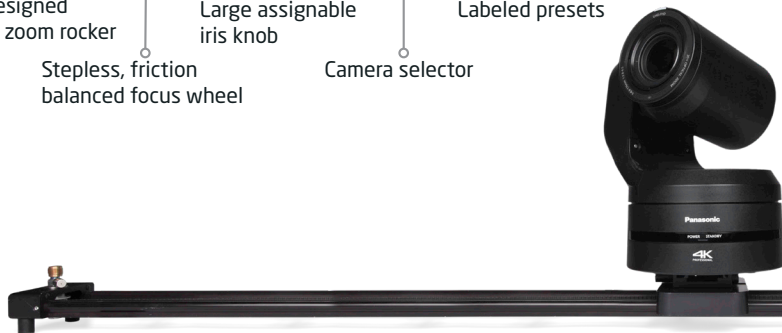
Custom designed aluminum zoom rocker

Stepless, friction balanced focus wheel

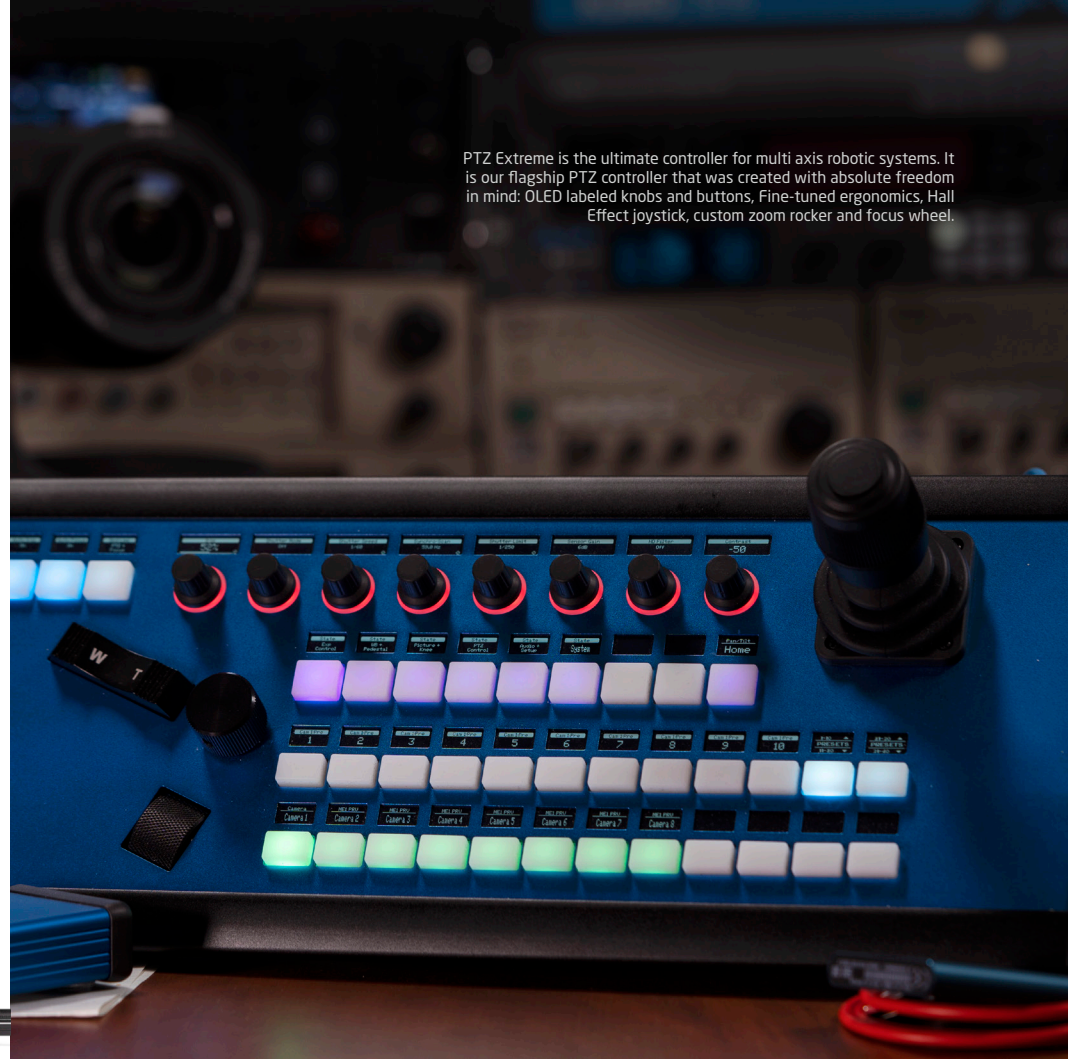
Large assignable iris knob

Camera selector

Labeled presets



PTZ Extreme is the ultimate controller for multi axis robotic systems. It is our flagship PTZ controller that was created with absolute freedom in mind: OLED labeled knobs and buttons, Fine-tuned ergonomics, Hall Effect joystick, custom zoom rocker and focus wheel.



PTZ Pro

1749€ / 2099\$



Options



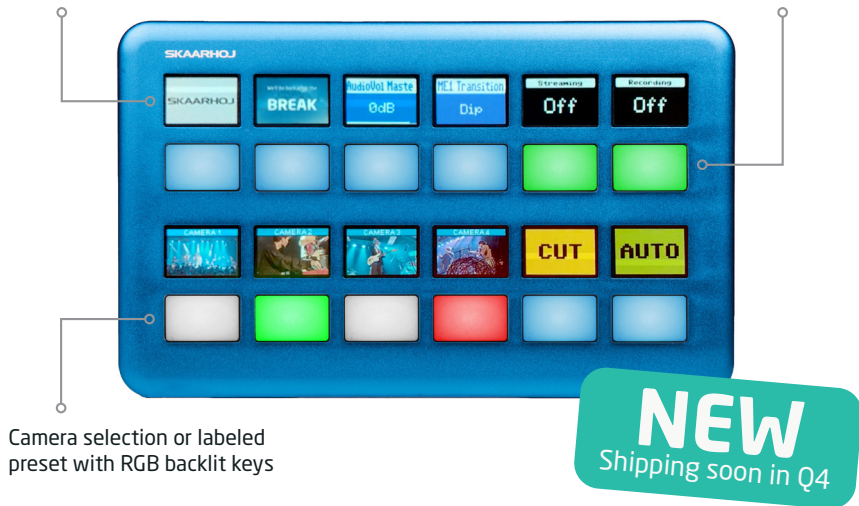
PTZ Pro is a full featured PTZ controller for robotic cameras. Together with PTZ Fly this is our most popular controller. With dedicated buttons and knobs for all settings and actions, it's easy and quick to use. You will enjoy all the same benefits as found on PTZ Fly while having a larger hand rest and faster, direct access.

Frame Shot

1099€ / 1299\$

Color OLED displays

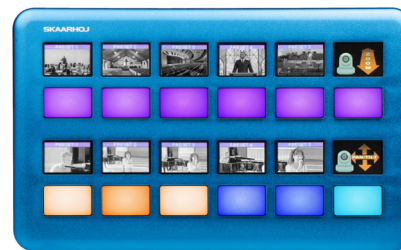
Multi function four-way button



Camera selection or labeled preset with RGB backlit keys

Frame Shot is SKAARHOJ's first controller with color displays and it's perfect for the many modular applications you can create with SKAARHOJ Blue Pill. This opens up a new world of tactile control and visual feedback that allows PTZ operators to see an image thumbnail of a clip preview and other media that he or she is about to put on Program.

Combine a Frame Shot with your PTZ Pro, PTZ Fly or PTZ Extreme and get dedicated buttons for preset control with image thumbnails of the preset at the moment of capture! Blue Pill not only provides the seamless integration of the controllers, it can also act as a frame grabber - even from a Multiview source. However, even without the frame grabber hardware, Blue Pill is powerful enough to pull out the thumbnails over network from a number of cameras directly, including Panasonic and Canon PTZ cameras.



PTZ Fly

1249€ / 1499\$

High-quality backlit encoders with widescreen OLED displays

Optional SDI In/Out for Blackmagic Camera Control

3-axis joystick (Optionally Hall Effect)



Options

+ SDI
+250€

+ JOY
+350€

Order with Hall Effect joystick for increased precision and ergonomics of operation



PTZ Fly has a very compact form factor while featuring a full size three-axis joystick. Pan, tilt and rotate the handle to control your cameras. The superb OLED displays clearly show what camera settings you control and which preset you recall. The PTZ Fly is in use in productions around the world, and is a popular choice for many small setups, like churches and universities.



PTZ Wiz

869€ / 1049\$

Pressure sensitive
elastomer zoom rocker

Set camera focus, exposure and other
settings with backlit high quality knobs

Pressure and direction sensi-
tive elastomer joystick pad



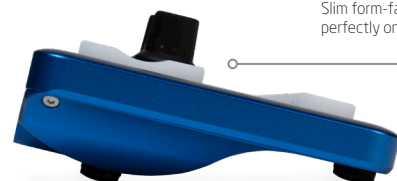
Multi function keys for
presets, camera selec-
tion, and live switching



With this controller you can control any SKAARHOJ supported brand!

PTZ Wiz is our smallest PTZ controller, and its great form-factor makes it blend in perfectly! It comes with the full power of UniSketch, which gives you all the same features as all our other PTZ controllers!

The elastomer buttons give you a nice tactile control experience, and the durable aluminum unibody enclosure will ensure that this controller stays with you for many years.



Slim form-factor - sits
perfectly on a desk



This controller also
comes in black.

Live Switching

"OMG your stuff is the cleverest coolest kit I've ever come across



In live production decisions have to be made quickly!
We created our Live Switching controllers with these situations in mind

SKAARHOJ gives you the power to map out all the sources, effects and settings that your next production requires, just the way you want!

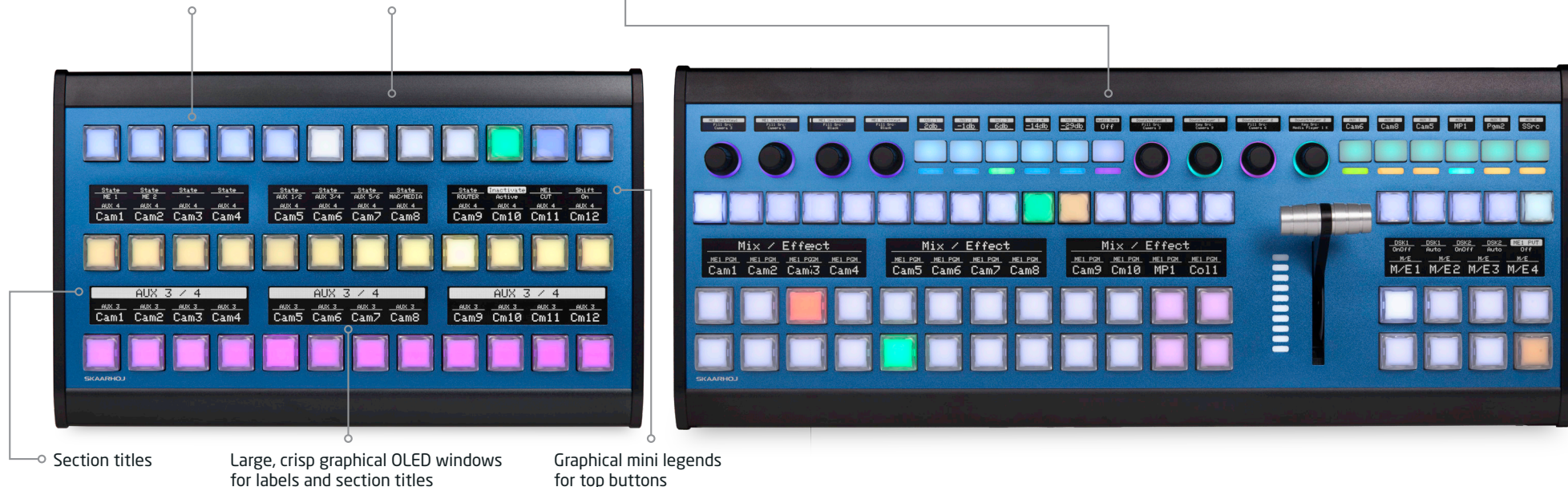
Master Keys

Sculptured cap RGB broadcast buttons - NKK japanese quality, best of the best

Subdivided into easily color coded sections

Four-way buttons and encoders with RGB back-light and OLED displays

Master Key 36 and Master Key One are truly exceptional control panels. They feature a powerful blend of industry standard NKK buttons and SKAARHOJ's innovative custom molded elastomer four-way buttons along with an uncompromising use of OLED displays to create a 100% flexible, and universal switcher surface for high-end studios and OB trucks.



Master Key 36 2599€ / 3099\$

4399€ / 5299\$ Master Key one

Air Fly Pro

2799€ / 3399\$

Auxiliary four-way buttons

Backlit encoders with crisp graphical OLED displays

Pressure sensitive elastomer zoom rocker and joystick pad

Keyer section with incredible reconfiguration flexibility



RGB multi level metering LEDs for VU, state indication and tally

12-key bus rows with four-way buttons and OLED legends

Hall Effect T-bar and RGB LED bar

ME section with multi level shift and user keys

Options

+ NKK
+600€

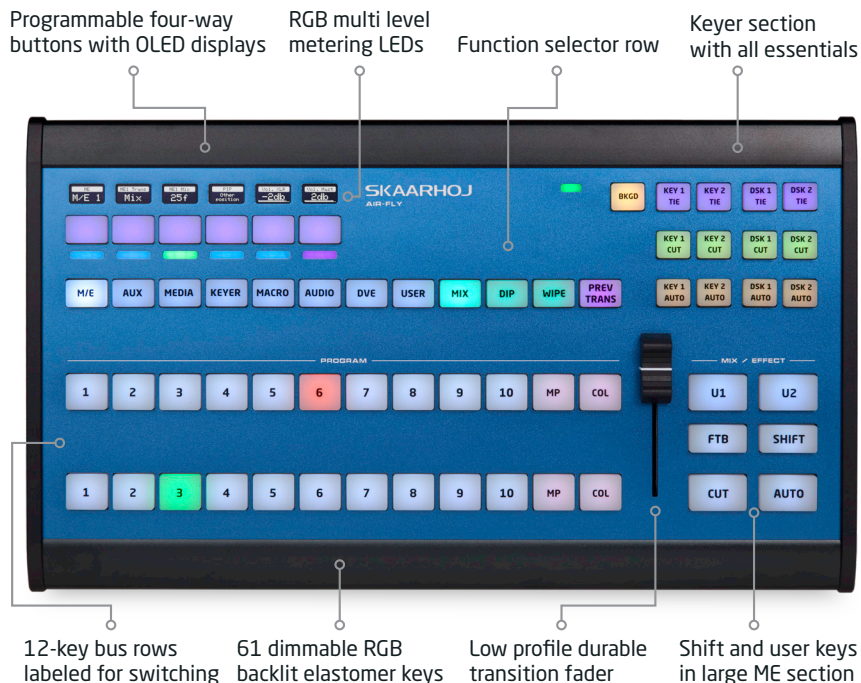


Air Fly Pro is the ultimate controller for the one man band setup; it combines PTZ and Live Switching in a beautiful way. The Hall Effect T-bar and the classic ME section will easily make you feel at home, and you can add even more luxuries with NKK buttons.



Air Fly

ATEM, vMix, Tricaster 1299€ / 1549\$



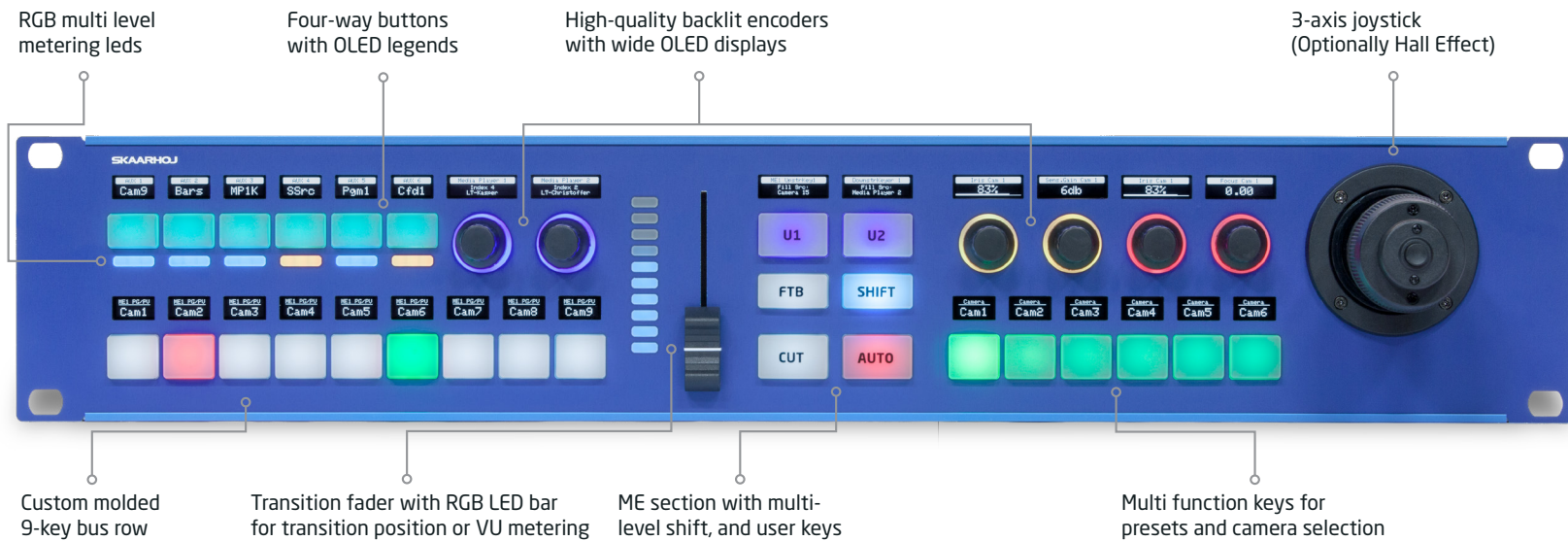
ATEM, TriCaster and vMix variants have unique key labels designed for the features of each system

With Air Fly you have a full featured desktop controller for live switching with Tricaster, ATEM or vMix systems at a very competitive price point. Works out of the box! Nevertheless you can still customize its function. Strong industrial design.

Rack Fusion Live

2149€ / 2599\$

Rack Fusion Live adds PTZ control to your live switching surface in a phenomenally compact controller perfect for small crews. Put it on your table or mount it in your rack, and enjoy the full power of UniSketch.

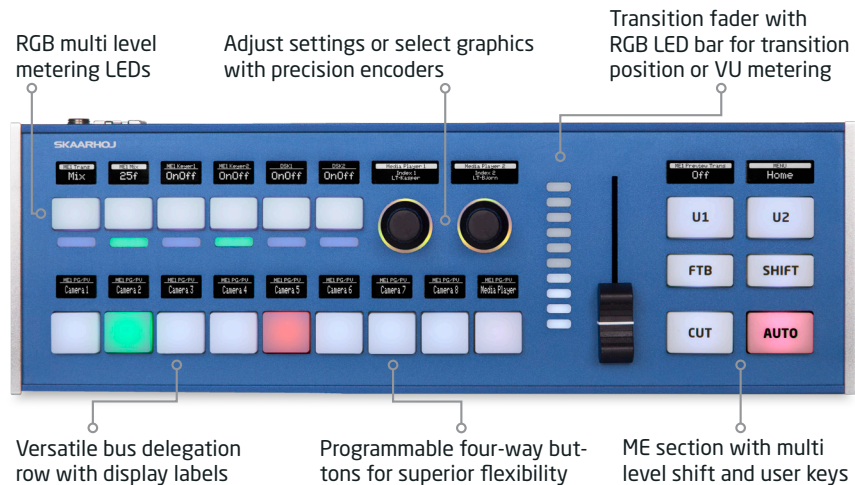


Options



Live Fly

1299€ / 1549\$



Ethernet with PoE

Slim, ergonomic console form factor



Options



Live Fly is a professional controller for 8-camera productions. It's perfect for smaller productions or fixed installations operated by volunteers. Use Blue Pill to combine it with our controller, XPoint 24, to accommodate more sources. For that über-pro feel, you can add classic broadcast buttons from NKK as an option.

Mini Fly

949€ / 1149\$

RGB multi level metering LEDs for VU, tally or step indication

Programmable four-way buttons with crisp OLED displays

Multi level shift key with step indicator



Custom molded RGB backlit keys

LED bar for transition position and VU metering

Smooth transition fader and Cut/Auto button

Ethernet with POE



Slim, ergonomic console form factor



The Mini Fly is your Swiss Army knife. It's super compact and yet super flexible, perfect for small live productions with 6 cameras, audio monitoring and transitions. And the six four-way buttons with OLED displays extend its power beyond imagination. Don't get us started...



Camera Shading

“Can I just say how impressed I am with your level of customer service, it is exceptional



Take control of the colors and shade your cameras to perfection! We support cameras made by Blackmagic Design, Arri, RED, Sony, JVC, AJA, Canon, IO Industries Ensemble Designs, and more.

Color Fly

3149€ / 3699\$

Programmable four-way buttons with OLED legends

RGB backlit encoders with crisp widescreen OLED legends

Optional SDI I/O for Blackmagic Design Camera Control



Camera selection and multi level shift key - control 4, 8 or even more cameras

RGB LED bar for level or position indication

4 motorized faders for multi camera iris control



Color Fly is your uncompromising multi camera RCP bringing you innovative iris control with motorized faders. You get the tactile position feedback of the classic iris joystick but can easily manage 4-8 or more cameras from the same compact panel.

Options

+ SDI GPI +500€

The SDI option adds a Blackmagic Arduino shield on the controller for reading and writing Camera Control data. Add general purpose opto-isolated inputs and relay outputs, 2x8 In/Out.



RCPv2

2449€ / 2899\$

Super crisp OLED window with large display tiles for settings

Programmable pressure and direction sensitive elastomer joystick pad

Master black knob with dedicated OLED display
Even more buttons with OLEDs

Camera selector DIP, GPI, SDI I/O (optional) on back

Ethernet with PoE



Utility buttons for preset or camera selection

Eight detented encoders with RGB backlight for function identification

Four-way buttons with OLED legends for dynamic labeling

Camera ID display with OLED technology and RGB tally bar

Classic iris fader, motorized fader, or encoder wheel with display and LED bar

Preview button can trigger GPI or control video router



Motorized Fader option



Wheel option

RCPv2 - the world's most flexible RCP. Fits into your existing bay or sits console style on a table top. Use this universal RCP regardless of which camera brand you shade! With the roller wheel or motorized fader option you have the perfect multi camera RCP. Dedicated to scalability and a positive, unified user experience.

Options

+Wheel
+250€

Substitute the joystick with a powerful and smooth roller wheel to increase the flexibility for multi camera control.

+Fader
+250€

Substitute the joystick with a motorized fader to increase the flexibility for multi camera control.

+SDI
+250€

The SDI option adds a Blackmagic Arduino shield on the controller for reading and writing Camera Control data.

RCP Pro

If you want the best comfort and most innovative components, RCP Pro is your choice. This high end camera controller has everything you love from our standard RCPv2, but taken to a really exclusive level! Furthermore it has Blue Pill Inside to support all the new high-end cameras coming to the live production market of today.

3999€ / 4699\$



GPIO connector is extended to 3 inputs and 3 outputs

Angled display for increased eye comfort

NEW
Shipping soon in Q4

New SKAARHOJ signature joystick with push action, OLED display, color coding, hires magnetic encoder ring and haptic feedback



Blue Pill Inside

Blue Pill Inside

RCP Pro is **born with the Blue Pill** hardware inside. This means this RCP will natively control a camera like the popular RED KOMODO camera used by many leading event producers. A physical Blue Pill is therefore not required as a middle man. However it also means the RCP Pro may not (yet) support every other camera the standard RCPv2 based on UniSketch does.

We suggest you consult with your SKAARHOJ expert to make the right choice!

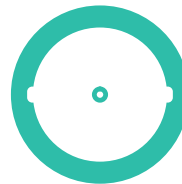
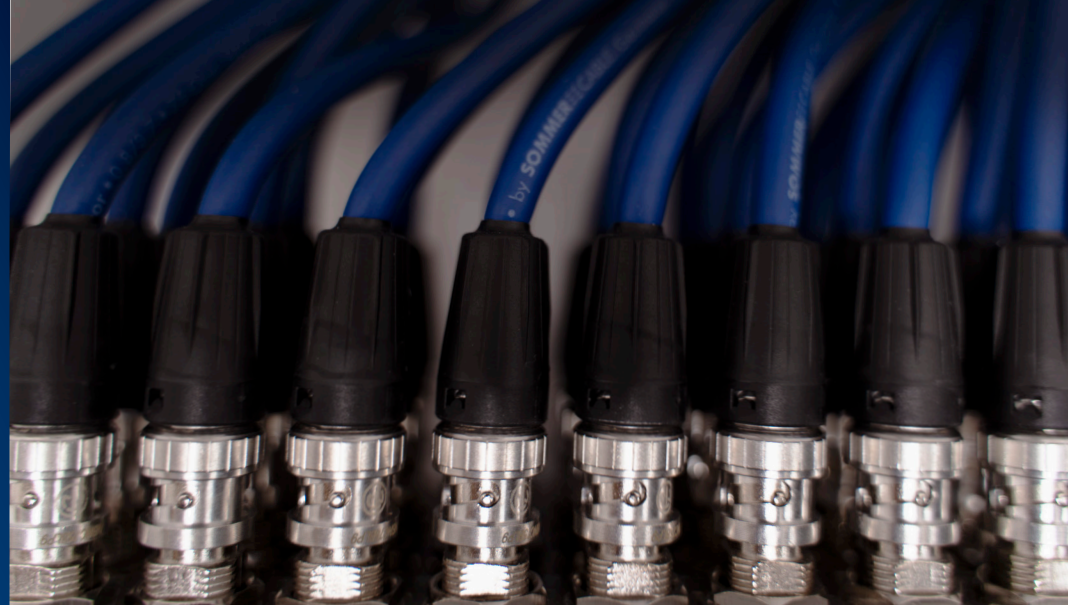


**Freedom
to control
what you
want**



Routing & Utility

"We ran two shows with your controllers last week
- it's truly a pleasure to work with them"



Control video routers, window processors, multiviewers, monitors, software, recording decks and streaming devices from brands such as AJA, Blackmagic Design, Ensemble Designs, Sony, Atomos and NETIO.

You can even control more with our generic device cores such as HTTP, TCP, UDP, OSC Artnet or SW-P-08.

Rack Controllers

Rack Fly Uno, Duo and Trio are raw muscle. All programmable four-way buttons. All RGB color coded. Far from all too much though - you deserve this for your universal control needs whether it's a video router, your VSM system or an AUX bus.

Rack Fly Uno 1299€ / 1599\$



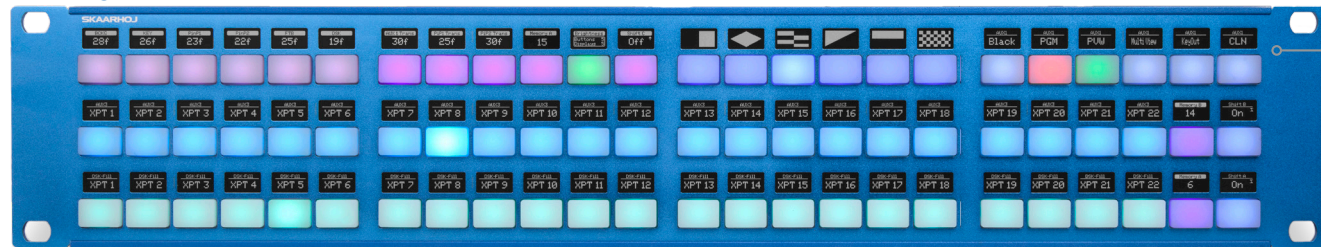
Mount in rack or use as a desk controller

Rack Fly Duo 1899€ / 2299\$



RGB multilevel metering leds

Rack Fly Trio 2699€ / 3099\$



Unparalleled flexibility with four-way buttons and OLED displays



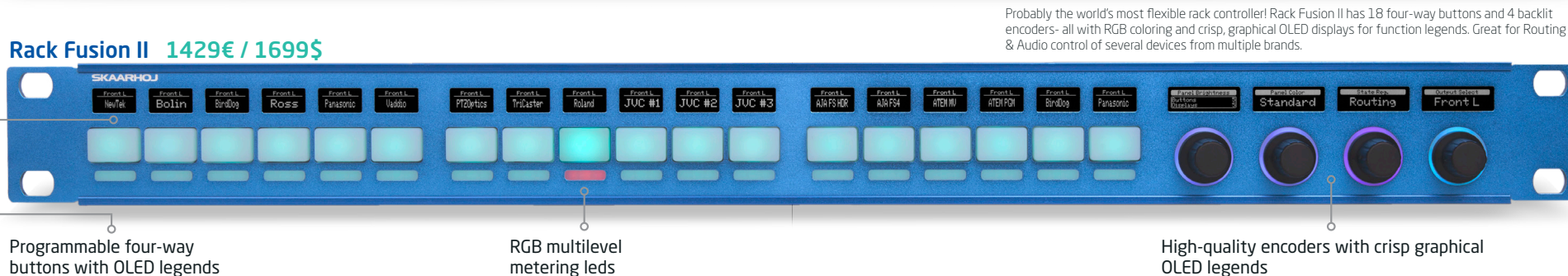
Rack Controllers

Rack Control Duo has 30 awesome four-way buttons and 12 backlit encoders all with RGB coloring and crisp graphical OLED displays for function legends. Perfect for applications where there is a need to adjust multiple parameters quickly. Fits perfectly in your rack or on your table.

Rack Control Duo 2499€ / 2949\$



Rack Fusion II 1429€ / 1699\$



Quick Pad

699€ / 799\$

Backlit encoders with RGB coloring and OLED legends

Programmable four-way buttons with bright OLED displays



Sleek form factor in high quality anodized aluminum



A great sidekick for your production!

Quick Pad has 10 awesome four-way buttons and 2 backlit encoders all with RGB coloring and crisp graphical OLED displays for function legends. Fully customizable and integrates with a bunch of broadcast hardware from our extensive list of device cores. Personalize the keys with custom icons from our library or create your very own.



Slim form-factor - perfect for your desk!



This controller also comes in black.

Broadcast Audio

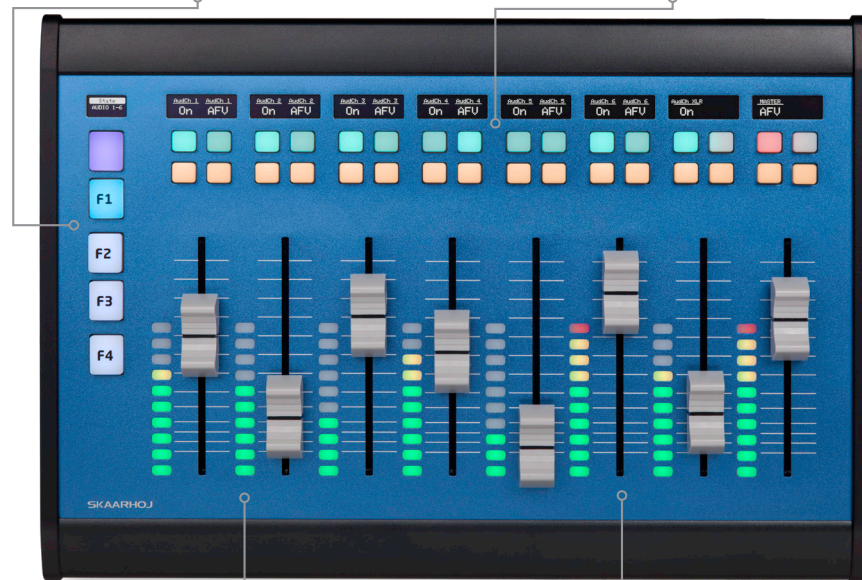
“Hey, listen to this!”

Wave Board

2199€ / 2599\$

Expand beyond 8 channels with sophisticated meta control section

2x2 auxiliary button matrix with crisp OLED legends for muting, solo, up/down action



Monitor audio levels with the RGB LED bars

8 channels of motorized faders for parameter and volume control

Tactile controls of the audio side of your production! A great complement to any ATEM or vMix setup. Add a Blue Pill to enjoy control of even more sound devices, like the popular Behringer X32.

Replay

"What a goal, let's take a look

XC8

1719€ / 2049\$

Copy/paste section for clip banks

Monitor timecode and system info with crisp OLED display



The most flexible replay controller you can get! Great for vMix, Softtron m:replay or DreamChip SSM500 slo-mo camera. Many people value the high quality NKK buttons, and we are proud to bring SKAARHOJ into the replay arena!

Link IO

“ I want to thank you and your team
for going the extra mile for us



Link IO is glue. It's a series of product that bridges the real world to network bits and bytes. It's how you get tally and shading data to and from SDI, it's your GPIOs, relays and opto isolated inputs, it's the LANC protocol meeting IPv4.

Link IO

Ethernet to GPI/O (General Purpose Interface) with UniSketch OS. Connects relays and opto-isolated inputs with network events. Use it to switch or route a source, start/stop recording, turn on tally lamps etc. 2x8 Inputs/Outputs with option for additional 2x8 I/O.



ETH GPI-Link

479€ / 589€

ETH GPI-Link Dual option

819€ / 999€

Receives "UDP Camera Control" information over Ethernet and forwards it on the SDI out connector. A number of alternative firmwares exist for this device to address various use cases.



ETH SDI-Link

599€ / 699€



ETH LANC-Link

449€ / 549€



Converts LANC data to and from ethernet for use with SKAARHOJ controllers, for instance to enable Sony LANC and Canon RC-V100.

Extracts iris information from 3G-SDI input signal according to Blackmagic Designs Camera Control Protocol. Outputs analog B4 lens iris control (Hi-rose-12), tally LED and relay. Supports camera 1-10 by multi-position switch. SDI input passed through on SDI out.



SDI-B4 Link

519€ / 599€



Similar to SDI-B4 Link but the data input is via network instead of SDI. The protocol is also Blackmagic Camera Control, but over UDP ("UDP Camera Control") and typically served by a SKAARHOJ controller. Has an incredibly light and compact form factor.



ETH-B4 Link



429€ / 499€

Converts 16 digital inputs to tally data on the SDI out connector. Supports Blackmagic Design URSA Series and Studio cameras. Additionally 2x8 inputs/outputs can be added. Routing is configurable via UniSketch OS.



SDI-GPI Link



999€ / 1199€

This device is a network point that will bridge your TCP control applications to Blackmagic Design ATEM switchers. This is the solution for Crestron, Extron and similar AV systems that typically lets you set up a TCP connection. Most ATEM commands are systematically implemented for two-way data exchange.



ATEM-TCP Link

469€ / 569€

Blue Pill Extension Cables can bring even more utility and more simple cabling than you ever had! A single extension cable can drive power and signals to your favourite combination of POV camera, specialty lens and Pan-Tilt head - from a simple PoE Ethernet connection. Ask us for combinations!



Blue Pill Extension Cable

NEW
Shipping soon in Q4

Camera Tally

Connects multiple SKAARHOJ Tally Lamps using CAT5e. Lamps can be connected in a star-topology (every lamp connects to ETH-TALLY Link) or you can daisy chain up to three lamps on a single wire. ETH-TALLY Link is configurable so that you can create a tally for any device core you wish - like ATEM Switchers, vMix, TSL etc.



ETH-TALLY Link

599€ / 699\$



SKAARHOJ Tally Lamp

189€ / 219\$

SKAARHOJ Connecting the dots

Modularity Reimagined

Mix and match any SKAARHOJ controllers in any way you like. Build your own array of controllers! And have them work together in new and exciting ways. With Blue Pill (coming soon in Q4), it's never been easier and faster.



Read more about modularity with Blue Pill on page 80!

If you need a sidekick to an existing panel, then check out the Inline or Xpoint series. They will give you direct access to more features, like more presets or sources on your ME row. These also work great if you need a more generic surface to work with KeyBridge. The flexibility of SKAARHOJ lets you do whatever you need to do with these!



Inline 10



869€ / 1049\$

Live Fly



XPoint 24



1229€ / 1499\$

XPoint 48



2149€ / 2599\$

Air Fly Pro



Inline 22



1499€ / 1799\$

XC7



649€ / 819\$

MEGA PANEL!

The world's largest SKAARHOJ controller! Build your own panel from 1 M/E to 4 M/E. Design your hardware control surface using the high end modules available and bring them together in a nice frame. With a mega panel you can control any gear and give your crew a truly unified way to control switchers, cameras, lights and sound in your production. Mega panel works well with video switchers such as ATEM Constellation, Tricaster, vMix and more.

NEW



Blue Pill is made for Mega Panel! The UniSketch based controllers in the mega panel melts together in Blue Pill and becomes one seamless control panel. Configuration becomes so much easier, the capacity increases, and future updates will make it an increasingly obvious choice. Blue Pill currently hosts ATEM, vMix and TriCaster configurations. Shipping soon in Q4.



**Feel the control at
your fingertips**



UniSketch OS

UniSketch OS is our software that connects a button press to your live show. It works by routing actions and state values between the interface components on the controller and your video switchers, recording decks and cameras on the set. You may never need to change the defaults, but if you do - it's really easy!

UniSketch also provides the Raw Panel protocol that connects it to Blue Pill Reactor.

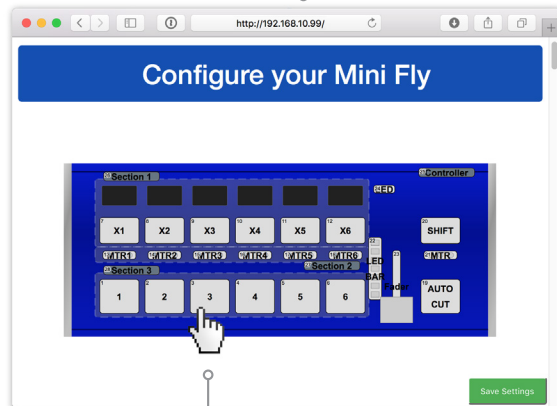


Bring your controller into "config mode"

Click the icon of a hardware component



Point a web browser to the IP address of the controller



BMD HyperDeck #4: Next Clip
BMD HyperDeck #4: Prev Clip
BMD HyperDeck #4: Fast Forward
BMD HyperDeck #4: Reverse
BMD HyperDeck #4: Jog
BMD HyperDeck #4: Slot select
BMD HyperDeck #4: Input
BMD SmartScope: Brightness
BMD SmartScope: Contrast
BMD SmartScope: Saturation
BMD SmartScope: Scope
BMD SmartScope: Border
BMD SmartScope #2: Brightness
BMD SmartScope #2: Contrast
BMD SmartScope #2: Saturation
BMD SmartScope #2: Scope
BMD SmartScope #3: Brightness
BMD SmartScope #3: Contrast
BMD SmartScope #3: Saturation
BMD SmartScope #3: Scope
BMD VideoHub: Route Input to Output
BMD VideoHub: Store preset
BMD VideoHub: Recall preset
AJA KUMO: Route Input to Output
AJA KUMO: Store preset
AJA KUMO: Recall preset

VMix: Active Src

VMix: Preview Src

VMix: Prv/Act Src

VMix: OverlayInput

VMix: Cut

VMix: Fade

VMix: FadeToBlack

VMix: Transition Rate

VMix: Change Value

VMix: CountDown

VMix: Stream

VMix: Record

VMix: Replay Duration

VMix: Replay Speed

VMix: Replay

VMix: Transition To

VMix: Next Event

VMix: Previous Event

VMix: Replay Events

VMix: Replay Toggle Camera

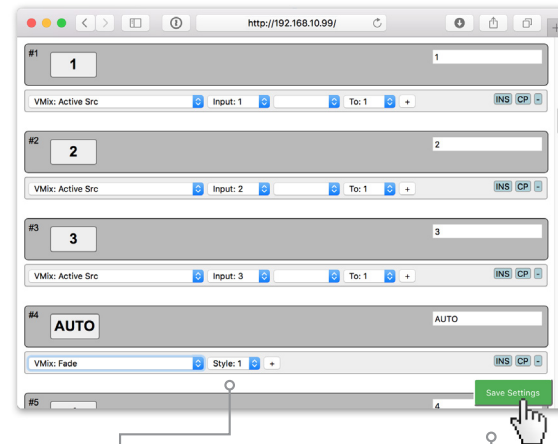
VMix: Replay Move Event

VMix: Replay Copy Event

VMix: Replay Toggle Live

VMix: Replay Toggle Direction

System: Shift Level



Each action will typically provide additional parameters

When you're done, click "Save Settings" and the changes are instantly effective

All installed device cores will show up in the dropdown with the actions they provide



That was cool!
And easy

cores.skaarhoj.com



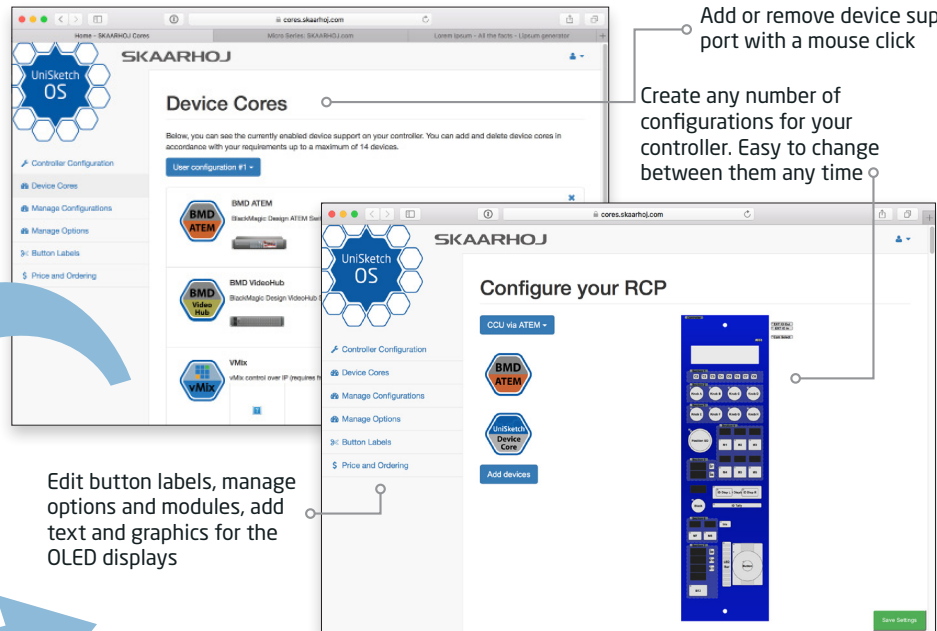
UniSketch OS goes hand in hand with our online repo, cores.skaarhoj.com. Here we store UniSketch OS, the newest device cores and your unique controller configuration. From cores.skaarhoj.com, you receive a uniquely created firmware with exactly the features you asked for.

"Check for Updates" will generate a new firmware with the changes made online

"Online Configuration" will take you to cores.skaarhoj.com

Open the SKAARHOJ firmware application. It will recognize your SKAARHOJ controller

Connect your SKAARHOJ controller to your computer with USB



Blue Pill Reactor

New software, new possibilities.

NEW
Shipping soon in Q4

Discover and control

Simply add panels and devices by automated network discovery to your project. No more post-it notes with IP addresses!

Add SKAARHOJ panels, your favourite cameras and switchers into your project with a single click and explore new ways of interacting with them.

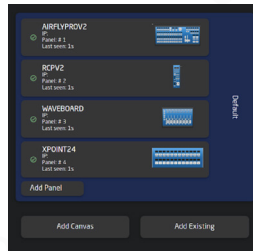
Unite the panels!

Reactor allows your panels to 'talk to each other'.

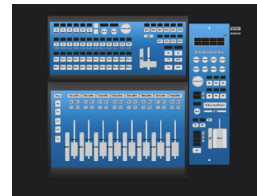


Menu controls on one panel, device settings on another?

Easy!

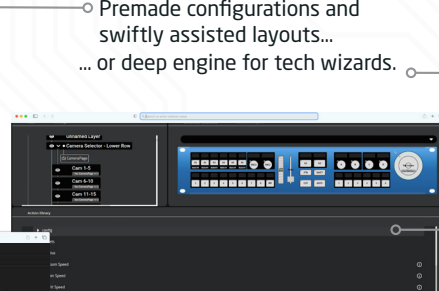
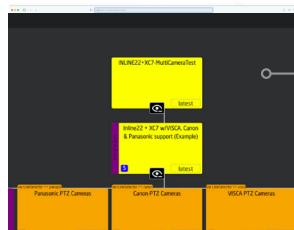


Spread out the controls seamlessly as you see fit, give your panels new purpose and get (even more) creative with custom layouts!

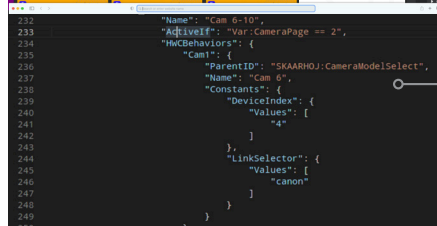


Configuration is your playground.

Reactor brings a new way of configuring your panels. Multiple ways, to be precise! Whether it's a single panel or your dream custom layout of multiple controllers. Simple configurations for volunteers or complex nested menus for hardcore professionals.



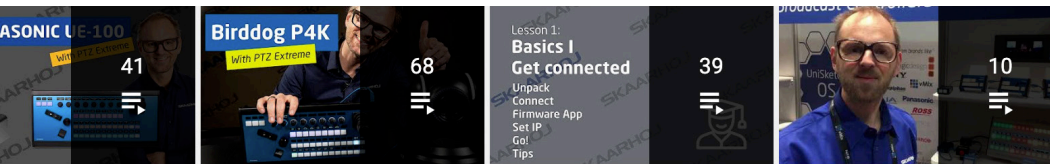
Premade configurations and swiftly assisted layouts...
... or deep engine for tech wizards.



And if you prefer a terminal over a graphical interface, code the configurations yourself!



Reactor can do it all!



**Dig deeper and
learn more on our
channel**



**That's a
wrap!**



We ease the control of technology for people in media production



We are now in the US!

SKAARHOJ ApS - Rosenkaeret 11C st.th. - 2860 Soeborg - Denmark
SKAARHOJ Inc. - The Tower Burbank - 3900 West Alameda Ave. - Suite 1200 - Burbank - CA 91505
Reg. No. 39 69 95 83 | www.skaarhoj.com | +45 31 12 52 52